

TOTO®

Oberon™ S Single-Handle Faucet (0.35GPM) TL363SDA03

This Oberon faucet is an intuitive single-handle lavatory faucet with a maximum ultra low flow rate of 0.35 GPM. The product has a lever handle made of quality full-brass body, a durable ceramic disc mixing cartridge and includes a metal pop-up drain assembly.



Performance dashboard

Features & functionality

Low-flow 0.35 gpm (1.3 lpm) commercial faucet
Streamlined design with quality low-lead full-brass body
Single-lever handle with hot and cold color indicators
Durable ceramic disc mixing cartridge
Drain not included

[Visit TOTO for more product specifications](#)

CSI MasterFormat® 22 42 39

Environment & materials

Improved by:

Extra low flow faucet with its 0.35gpm performance

Certification & rating systems:

CalGreen Compliant
Declare™ Label, Red List Free
Contributes to earning credits in LEED®



Material Health Overview

Declare

Declare labels are issued to products disclosing ingredient inventory, sourcing and end of life options. Declare labels are based on the Manufacturers Guide to Declare, administered by the International Living Future Institute.

How it works

Material ingredients are inventoried and screened against the [Living Building Challenge](#) (LBC) Red List which represents the ‘worst in class’ materials, chemicals, and elements known to pose serious risks to human health and the greater ecosystem.

The Health Product Declaration®

The HPD Open Standard provides a consistent, and transparent format to accurately disclose the material contents and associated hazard classifications for a building product.

How it works

Material ingredients are screened and categorized according to the hazards that international governmental bodies and toxicology experts have associated with them, based on two listings:

- Authoritative lists maintained or recognized by government bodies
- Screening lists, which include chemicals that government bodies determined need further scrutiny, as well as chemical lists not recognized by any government body.

Assessment scope and results

Declare™

Inventory threshold: 100 ppm

Declare level:

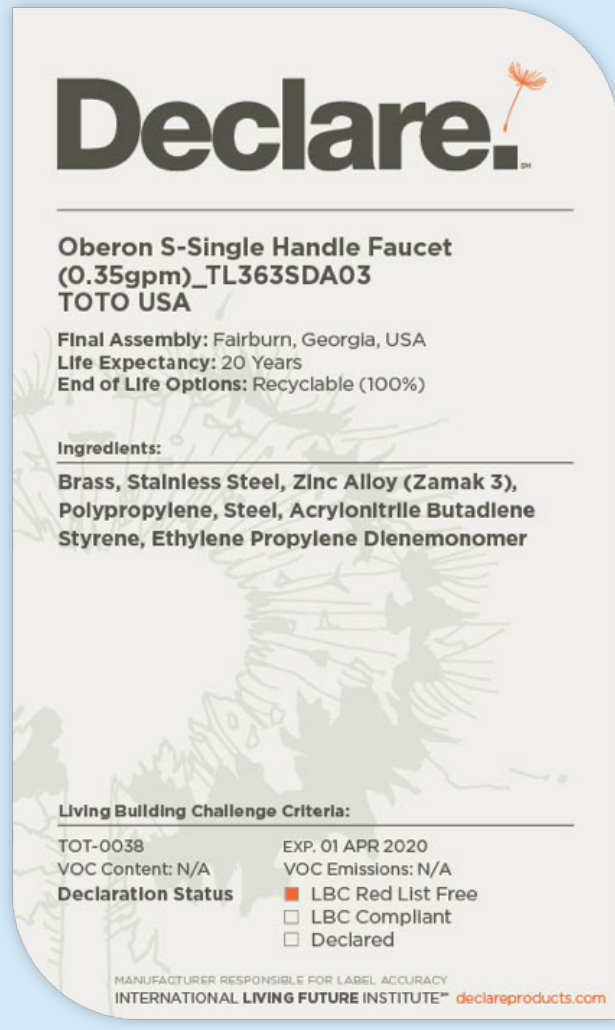
The Declare product database and label are used to select products that meet the LBC's stringent materials requirements, streamlining the materials specification and certification process.

- LBC Red List Free ?
- LBC Compliant ?
- Declared ?



Click the label to see the full declaration.

● OBERON S-SINGLE HANDLE FAUCET (0.35GPM)_TL363SDA03



References

Declare

OBERON S-SINGLE HANDLE FAUCET (0.35GPM)_TL363SDA03

Manufacturer's Guide to Declare

A comprehensive guide providing information about the program, the assessment methodology, how to submit material data to obtain a Declare label and how they are used to meet the Health & Happiness and Materials Petals of the Living Building Challenge.

What's in the product and why

Declare level

'Red List Free' is awarded to products when no materials on the Living Building Challenge's Red List are in the product. The LBC Red List represents the “worst in class” materials, chemicals, and elements known to pose serious risks to human health and the greater ecosystem.

What's in the product and why

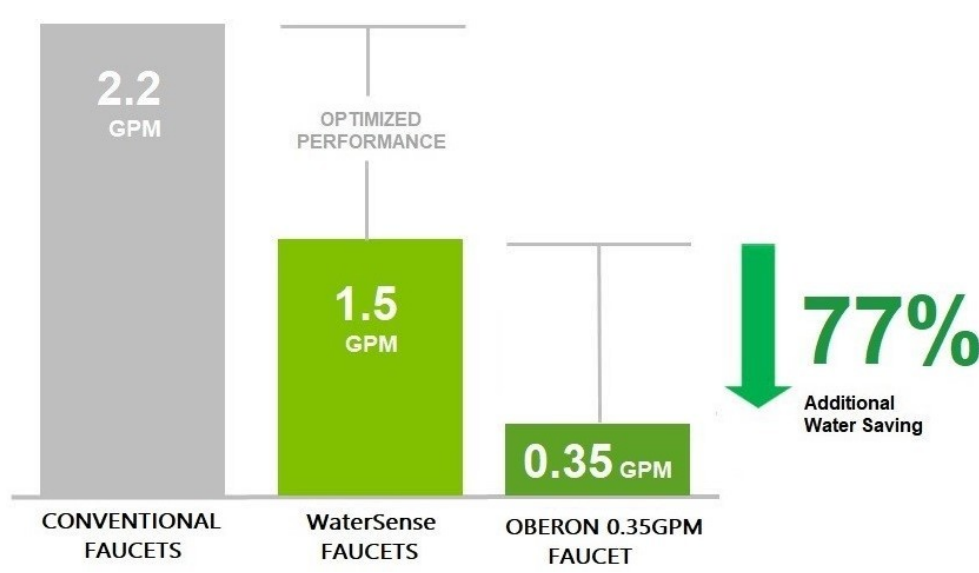
The TOTO facility in which the faucet is manufactured is ISO 14001 certified. This means that the facility has implemented an environmental management system as part of TOTO's commitment to the health of the environment.

Red List materials

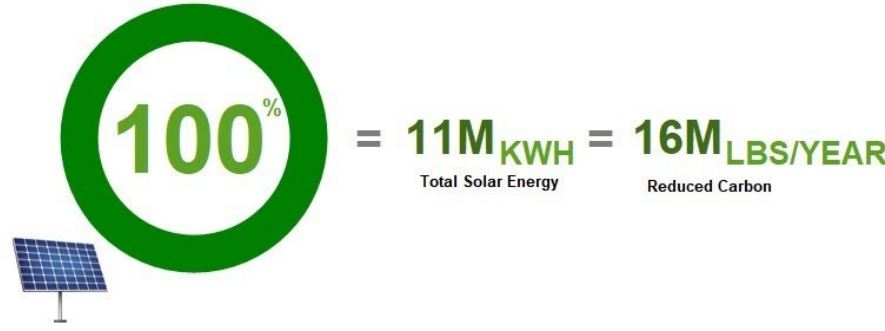
No Red List materials are present in the faucet.

Where it goes at the end of its life

TOTO encourages consumers to recycle their used faucets. Contact your local municipality for recycling programs.



Utilizing the same proven engineering as our high efficiency faucets, 1.5gpm and 1.2gpm, the 0.35gpm Oberon Faucet reinforces TOTO's performance reputation while offering additional water savings of 77% and 71% respectively.



TOTO's Morrow plant matches 100% of its electricity usage through Georgia Power Simple Solar and helps grow solar energy. 14 million kilowatt hours of green energy helps reduce 23 million pounds of carbon each year.

How we're making it healthier

This intuitive single-handle lavatory faucet with a maximum ultra low flow rate of 0.35 GPM helps to save water, reduce pollution and hazardous waste, thereby mitigating human health impacts.

Rating systems

LEED BD+C: New Construction | v4 - LEED v4

Building product disclosure and optimization

Material Ingredients

Credit value options 1 product each

☒ 1. Reporting ☐ 2. Optimization ☐ 3. Supply Chain Optimization

Living Building Challenge 3.0

Materials petals imperatives

☒ 10. Red List Free ☐ 12. Responsible Industry ☐ 13. Living Economy Sourcing

Well Building Standard®

Air and Mind Features

☐ Air, 26. Enhanced Material Safety

☒ Mind, 97. Material Transparency ☐ Mind, 98. Organizational Transparency

Collaborative for High Performance Schools National Criteria

MW 10.1 — Building Product Health Related Information Reporting

☒ Product Health Related Information Report 1 point



SM Material Health Overview™

VERIFICATION

Material evaluation

Self-declared



Validity: 04/04/19 – 04/04/22
TOT – 04/04/19 – MHO-04

The material health evaluation is self-declared and done in accordance with the Manufacturers Guide to Declare.

International Living Future Institute
501 East Madison St.
Seattle, WA 98122
www.living-future.org
206 223 2028



TOTO USA
1155 Southern Road
Morrow, GA 30260
www.totousa.com

Contact us