



Jet Stream®

Ultra Blowing Wool Insulation

Knauf Insulation's Jet Stream® Ultra is an unbonded, virgin fibrous glass blowing insulation. It utilizes a high degree of recycled content, and offers optimal thermal properties, excellent coverage and blowing characteristics. Our blowing insulation can be installed in new and existing structures and is excellent for blow-in-blanket applications. It dense-packs in wall cavities with no settling.



Performance dashboard

Features & functionality

Fills all gaps, creating a thermal barrier against outside air and reducing utility bills

Resists heat flow with an R-value of R-15 in 2 x 4 construction and R-23 in 2 x 6 construction

Contains high degree of recycled content

Improves Sound Transmission Class (STC) ratings by 4 to 10 points

Visit Knauf for more product information
[Jet Stream® Ultra Blowing Wool Insulation](#)

Environment & materials

Improved by:

Utilization of recycled glass

Optimized compression packaging

Certification & rating systems:

Declare, Red List Free

UL GREENGUARD Gold certified

UL Validated recycled content

UL Validated formaldehyde-free

Audited, European Certification Board for Mineral Wool Products exoneration process

ASTM C764; Type I

MasterFormat® 07 21 26
Jet Stream Ultra Blowing Wool Insulation
[Guide Spec, Technical Data Sheet](#)
For spec help, [contact us](#) or call 317 421 8727

[See LCA, interpretation & rating systems](#)

[See materials, interpretation & rating systems](#)



SM Transparency Report (EPD)™ + Material Health Overview™

EPD LCA

3rd-party verified

Transparency Report (EPD)

3rd-party verified

Validity: 12/12/23 – 12/12/28
KNA – 12122023 – 003

MATERIAL HEALTH Material evaluation

Self-declared

This environmental product declaration (EPD) was externally verified by **Harmony Environmental, LLC**, according to **ISO 21930:2017; UL Part A; UL Part B for Building Envelope Thermal Insulation Products; and ISO 14025:2006.**

Harmony Environmental, LLC
16362 W. Briarwood Ct.
Olathe, KS 66062
www.harmonyenviro.com
(913) 780-3328



SUMMARY

Reference PCR

UL Part B: Building Envelope Thermal Insulation v2.0

Regions; system boundaries

North America; Cradle-to-grave

Functional unit / ESL:

1 m² installed insulation material, packaging included, with thickness that gives average thermal resistance of R_{SI} = 1m²·K/W over an estimated service life (ESL) of 75 years

LCIA methodology: TRACI 2.1

LCA software; LCI database

LCA for Experts v10.7; LCA for Experts 2023

In accordance with ISO 14044 and the reference PCR, this life cycle assessment was conducted by Sustainable Minds and verified by Harmony Environmental, LLC.

Public LCA:

Knauf Insulation North America and Manson Insulation Products

Knauf Insulation, Inc.

One Knauf Drive
Shelbyville, IN 46176
www.knaufinsulation.us
317 398 4434

Contact us

LCA & material health results & interpretation

Jet Stream® Ultra Blowing Wool Insulation

Albion, MI

Lanett, AL

Shasta Lake, CA

Shelbyville, IN

EPD additional content

Material health

Evaluation programs

Declare

Declare labels are issued to products disclosing ingredient inventory, sourcing and end of life options. Declare labels are based on the Manufacturers Guide to Declare, administered by the International Living Future Institute.

How it works

Material ingredients are inventoried and screened against the [Living Building Challenge](#) (LBC) Red List which represents the 'worst in class' materials, chemicals, and elements known to pose serious risks to human health and the greater ecosystem.

Assessment scope and results

Declare™

Inventory threshold: 100 ppm

Declare level:

The Declare product database and label are used to select products that meet the LBC's stringent materials requirements, streamlining the materials specification and certification process.

- LBC Red List Free [?]
- LBC Red List Approved [?]
- Declared [?]

Click the label to see the full declaration.

● **Jet Stream® Ultra loosefill insulation**



What's in this product and why

Declare level

Jet Stream® Ultra contains no Red List chemicals. The Red List is a list of chemicals that are not allowed in Living Building Challenge buildings. Being Red List free is our design benchmark at Knauf.

Jet Stream Ultra is designed to be blown into walls and attics. This product works well in interiors, as it is virgin glass with a small amount of lubricant. The product meets GreenGuard Gold criteria and is validated to be formaldehyde-free.

The fiber comprising Jet Stream Ultra is 98 – 99% inert virgin glass, with a small amount of lubricant added. The ingredients in this product avoid the 800+ chemicals of the Living Building Challenge Red List. The product is designated Red List Free and formaldehyde-free.

What's in the product and why

Because Jet Stream Ultra is designed to be blown into walls and attics, it contains a small amount of fossil based lubricant (1 – 2%) to facilitate blowing. The remainder of the product is inert virgin glass fiber. The ingredients of Jet Stream Ultra avoid the 800+ chemicals of the Living Building Challenge Red List.

This product has a high degree of recycled content, and environmental mining impacts are reduced approximately 60% by using recycled glass rather than virgin materials. The glass formulations used in Knauf products are audited for health & safety using the European Certification Board for Mineral Wool Products (EUCEB) exoneration process.

Where it goes at the end of its life

At this time, the product is landfilled at end of life. We take extended producer responsibility very seriously and have active programs to address end of life. There is no option other than landfills at this time.

How we're making it healthier

Knauf Insulation North America (KINA) engages very closely with its vendors to eliminate and avoid chemicals of concern.

- We lead the fiberglass industry in the most Red List Free products.
- Our products are certified for indoor air quality and meet the most stringent emission requirements from UL Environment through the Greenguard certification program.
- Our products are Certified Formaldehyde Free by UL Environment.

[See how we make it greener](#)

References

Declare

Jet Stream® Ultra Blowing Wool Insulation

Manufacturer's Guide to Declare

A comprehensive guide providing information about the program, the assessment methodology, how to submit material data to obtain a Declare label and how they are used to meet the Health & Happiness and Materials Petals of the Living Building Challenge.

Rating systems

LEED BD+C: New Construction | v4 - LEED v4

Building product disclosure and optimization

Material Ingredients

Credit value options 1 product each

1. Reporting 2. Optimization 3. Supply Chain Optimization

LEED BD+C: New Construction | v4.1 - LEED v4.1

Materials and resources

Material Ingredients

Credit value options 1 product each

1. Reporting 2. Optimization 3. Supply Chain Optimization

Living Building Challenge

Materials petals imperatives

10. Red List Free 12. Responsible Industry 13. Living Economy Sourcing

WELL Building Standard®

Air and Mind Features

- X07 Materials Transparency

- X08 Materials Optimization

Collaborative for High Performance Schools National Criteria

EQ C7.1 Material Health Disclosures

- Performance Approach 2 points

- Prescriptive Approach 2 points

SM Transparency Report (EPD)™ + Material Health Overview™

EPD LCA

3rd-party verified

Transparency Report (EPD)

3rd-party verified

Validity: 12/12/23 – 12/12/28
KNA – 12122023 – 003

MATERIAL HEALTH Material evaluation

Self-declared

This environmental product declaration (EPD) was externally verified by **Harmony Environmental, LLC**, according to **ISO 21930:2017; UL Part A; UL Part B for Building Envelope Thermal Insulation Products; and ISO 14025:2006.**

Harmony Environmental, LLC
16362 W. Briarwood Ct.
Olathe, KS 66062
www.harmonyenviro.com

(913) 780-3328



SUMMARY

Reference PCR

UL Part B: Building Envelope Thermal Insulation v2.0

Regions; system boundaries
North America; Cradle-to-grave

Functional unit / ESL:
1 m² installed insulation material, packaging included, with thickness that gives average thermal resistance of R_{si} = 1m²-K/W over an estimated service life (ESL) of 75 years

LCIA methodology: TRACI 2.1

LCA software; LCI database
LCA for Experts v10.7; LCA for Experts 2023

In accordance with ISO 14044 and the reference PCR, this life cycle assessment was conducted by Sustainable Minds and verified by Harmony Environmental, LLC.

Public LCA:

Knauf Insulation North America and Manson Insulation Products

Knauf Insulation, Inc.
One Knauf Drive
Shelbyville, IN 46176
www.knaufinsulation.us
317 398 4434

Contact us

How we make it greener

Jet Stream® Ultra Blowing Wool Insulation

Collapse all

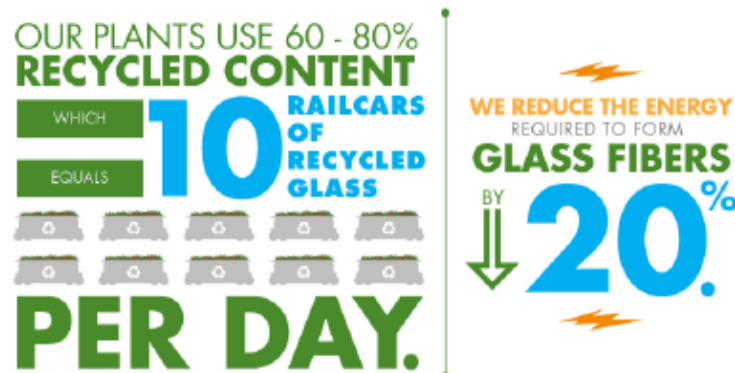
RAW MATERIALS ACQUISITION



Utilize recycled content

By leveraging recycled content, we reduce the energy required to form glass fibers.

- We use about 10 railcars of recycled glass per day.



MANUFACTURING

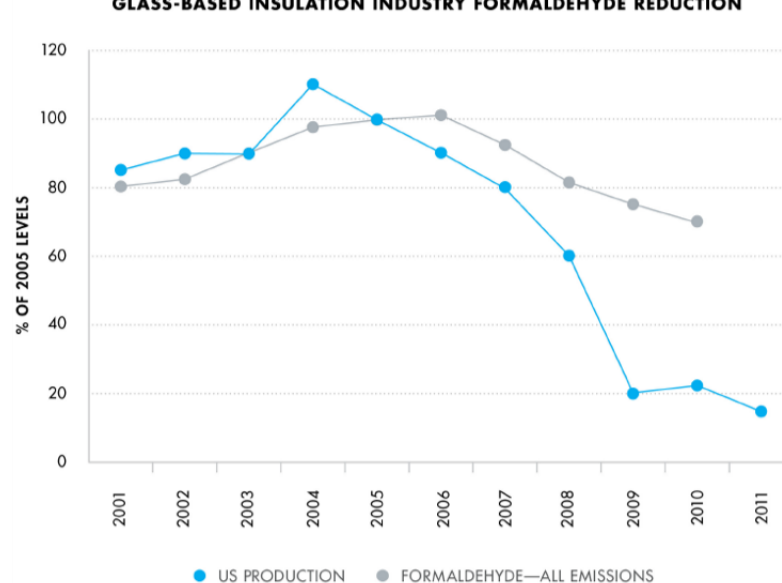
Reduce scrap generation and energy consumption

Continuous improvement is the methodology we utilize to engage the entire Knauf team in our manufacturing excellence and sustainability journey.

Knauf Insulation, comprised of Knauf Insulation North America (KINA) and Knauf Insulation Europe, Middle East, Asia, Asia Pacific (KI EMEA & APAC), share an overall global certification for ISO 45001 Health & Safety, ISO 14001 Environmental, ISO 50001 Energy, and ISO 9001 Quality through a third-party Certification Body.

Our Continuous Improvement Program, with all its tools and systems associated with it, provide a formal process where we are constantly monitoring our manufacturing and sustainability Key Performance Indicators (KPIs) with an eye towards improvement. This Continuous Improvement centric management system has proven to be effective in improving our sustainability by reducing scrap generation and energy consumption.

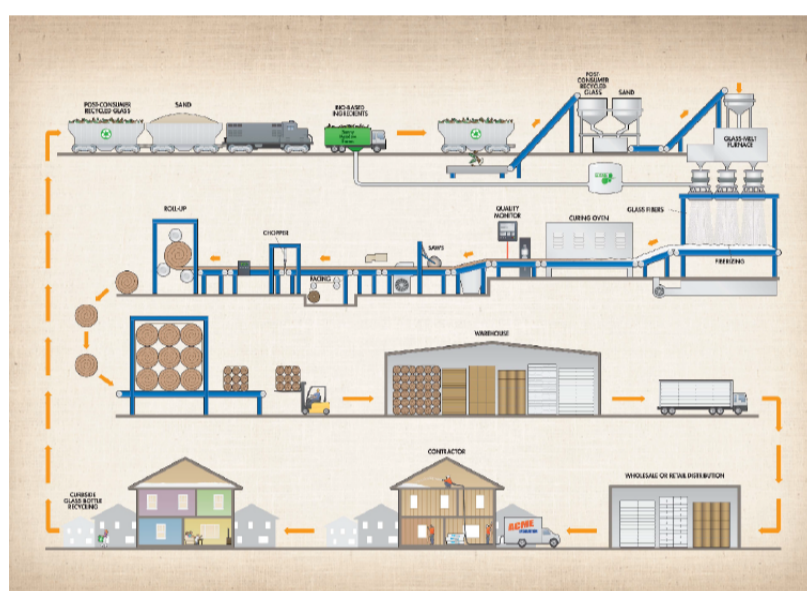
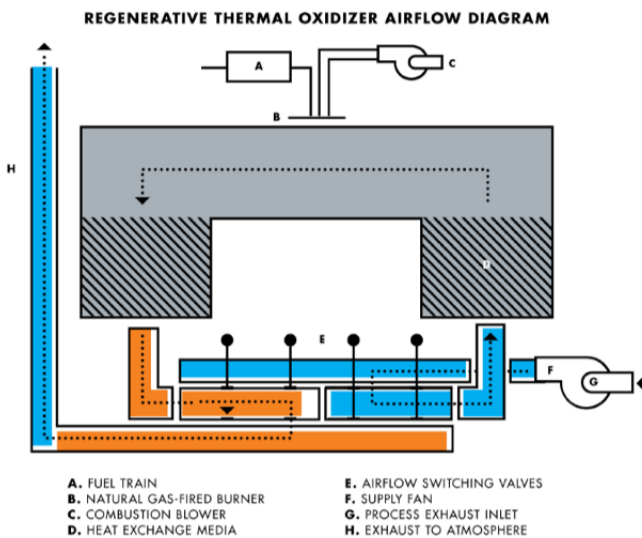
GLASS-BASED INSULATION INDUSTRY FORMALDEHYDE REDUCTION



Green manufacturing Processes

Regenerative thermal oxidizers We use regenerative thermal oxidizers (RTO) to capture and recycle much of the energy we use to cure our products. RTO is equipment used for the treatment of exhaust air. Our ovens exhaust into a ceramic heat exchange media to capture and reuse the heat in the exhausted air. Therefore, the amount of energy required to cure our product is reduced substantially.

REGENERATIVE THERMAL OXIDIZER AIRFLOW DIAGRAM



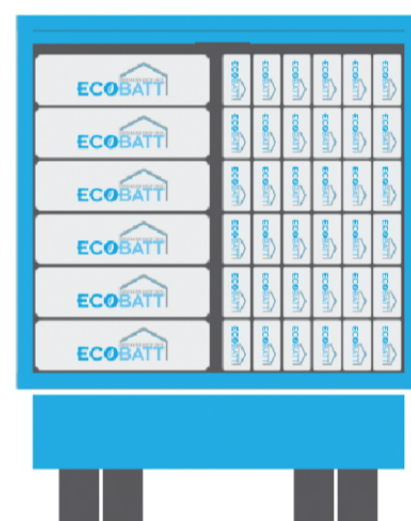
TRANSPORTATION



Leverage compression packaging

Glass is a high modulus material, which helps to facilitate compression packaging. We compress our insulation to fit up to five times more product on every truck, thereby reducing the amount of deliveries that need to be made, which saves time and emissions from transportation.

WE COMPRESS OUR INSULATION TO FIT UP TO 5X MORE PRODUCT ON EVERY TRUCK.



INSTALLATION AND MAINTENANCE



Be confident in glass fiber's safety

In the past, a label regarding the carcinogenic potential of insulation made from glass fibers was required on all packaging. Following forty years of research, fiberglass has been exonerated entirely. Our fiberglass is comprised of fibers that are biosoluble, meaning that the fibers dissolve in the body in a short period of time and exit the body with normal bodily functions. The scrutiny fiberglass has undergone is now seen as proof of its safety.

Meet and exceed green standards

GREENGUARD certified On the forefront of indoor air quality, Knauf Insulation North America had the first GREENGUARD certified product in 2002. This achievement led us to understand the impact our formaldehyde-free products could have on the indoor environment. The formaldehyde-free claim is third party validated by UL Environment.

3rd Party UL Environmental Claim Validation states that Knauf Insulation products manufactured in North America contain an average of 61% recycled content, consisting of 20% post-consumer and 41% pre-consumer recycled glass.

EUCEB tested Glass fiber is a widely studied building material. All of our processes and formulations are voluntarily third-party audited for compliance with the health and safety exonerated criteria for glass and rock based fiber through the European Certification Board for Mineral Wool Products (EUCEB) exonerated process. This guarantees the formulations are biosoluble and pose no health concerns. Having over 35 years of research behind its safety, fiberglass products have been thoroughly evaluated and therefore we believe it is one of the safest building materials available today.



Green building rating systems

Our products offer a vast array of potential credits for major green building rating systems, including: WELL, LEED v4, International Green Construction Code, Green Guide for Health Care, NAHB Green Building Standard, and more.

Visit the [green building rating systems page](#) to see all the credits you can earn using Manson and Knauf Insulation products

Green building rating system credits

Find out all the credits you can earn with Knauf products.

[Learn more](#)

DISPOSAL



Promote Recycling

By taking a comprehensive approach of the benefits of recycling, Knauf Insulation North America advocates and promotes local recycling initiatives as well as actively participates in state and local government policy development. In addition, as a member of the North American Insulation Manufacturers Association (NAIMA) and Glass Recycling Coalition (GRC), we encourage regulatory and legislative initiatives that focus on glass recycling infrastructure deployment to increase the availability of post-consumer recycled glass.



SM Transparency Report (EPD)™ + Material Health Overview™

EPD	LCA
3rd-party verified	<input checked="" type="checkbox"/>
Transparency Report (EPD)	
3rd-party verified	<input checked="" type="checkbox"/>
Validity: 12/12/23 – 12/12/28 KNA – 12122023 – 003	
MATERIAL HEALTH	Material evaluation
Self-declared	<input checked="" type="checkbox"/>

This environmental product declaration (EPD) was externally verified by **Harmony Environmental, LLC**, according to **ISO 21930:2017; UL Part A; UL Part B for Building Envelope Thermal Insulation Products; and ISO 14025:2006.**

Harmony Environmental, LLC
16362 W. Briarwood Ct.
Olathe, KS 66062
www.harmonyenviro.com
(913) 780-3328



SUMMARY

Reference PCR
UL Part B: Building Envelope Thermal Insulation v2.0

Regions; system boundaries
North America; Cradle-to-grave

Functional unit / ESL:
1 m² installed insulation material, packaging included, with thickness that gives average thermal resistance of R_{si} = 1m²·K/W over an estimated service life (ESL) of 75 years

LCIA methodology: TRACI 2.1

LCA software; LCI database
LCA for Experts v10.7; LCA for Experts 2023

In accordance with ISO 14044 and the reference PCR, this life cycle assessment was conducted by Sustainable Minds and verified by Harmony Environmental, LLC.

Public LCA:
Knauf Insulation North America and Manson Insulation Products

Knauf Insulation, Inc.
One Knauf Drive
Shelbyville, IN 46176
www.knaufinsulation.us
317 398 4434

[Contact us](#)